



« : »

μ μ :

: -

:

...

μ :

, ...

,

, μ μ

2015



« : »

Investigation of intensive care nurses' perception of care and its relationship with PHC

	μ	
μ	4
Ευχαριστίες	5
	6
Abstract	7
	8
1.	8
2.	10
2.1	11
3.	16
3.1	μ	16
3.3	μ	26
4.	()	27
4.1	30
4.2	33
	35
5.	35
5.1	35
5.2	μ -	35
5.3	36
	36
6.	38
7.	53
	59
	68

μ

: μ

: μ μ

: μ

:

: μ
 μ , μ
 μ . μ
 : μ
 μ μ μ
 μ , μ μ
 .
 : $\mu\mu$ 139 - μ μ
 μ μ
 μ μ μ μ
 μ (μ μ)
 (NDI-24-GR).

μ : μ μ
 μ (25,18±3,58) μ
 (42,94±14,15). μ μ
 $28,55\pm 10,36$ $14,18\pm 5,43$. μ
 μ .

μ μ
 μ μ :
 μ μ μ μ
 , ,
 , μ .
 μ μ .
 : , μ , μ ,

Abstract

Introduction: The nurses of ICU care for patients with life-threatening medical conditions and the patients often require long-term hospitalization. Therefore, nurses require many technical and behavioral skills to cope with the patient needs.

Aim: To investigate how nurses working in intensive care units and related sections in public hospitals, understand the concept of care and their relationship with the primary care.

Methodology: The survey involved 139 nurses working in intensive care units and related parts in closed GNL and UGNL who completed self-report questionnaires on socio-demographic data, altruism (altruism scale) and the importance of caring (NDI-24- GR).

Results: The nurses had relatively high levels of altruism (25.18 ± 3.58) and perceptual significance of care (42.94 ± 14.15). Subscale scores in clinical work and patient needs were respectively 28.55 ± 10.36 and 14.18 ± 5.43 . Care and altruism correlated significantly and positively. There were no differences depending on demographic and employment characteristics

Conclusion: The nurses working in the ICU and general hospital closed sections show very high levels of awareness of the importance of care in all its dimensions. Altruism and care are strongly related to one another.

Key words: care, nurses, intensive care unit, altruism

μ

μ

μ

μ

[3].

.

,

μ

μ

μ

μ

μ

,

μ

μ

[4].

, μ μ μ ,
μ μ ,
& [15].
Watson [16] μ ,
μ , μ ,
[17]. μ μ
μ ,
Watson
[18] .
μ [19]. μ , ,
, μ μ [20].

2.1

μ
, μ μ .
() μ
() . μ
μ
μ μ
[21]. μ μ μ
μ , μ , μ ,
μ μ [22].
μ μ , μ
μ . μ
μ , μ
[23].
μ .
μ Rogers
« μ
μ μ .

μ μ μ , μ
 , μ
 ». Rogers
 μ μ , μ .
 ,
 μ , μ
 μ [24,25]. H American Nurses
 Association [26] ο ,
 ,
 μ μ , μ
 μ , ,
 μ [27]. ,
 μ μ μ
 μ [13]. μ ,
 μ μ μ
 μ μ μ [28].
 μ , , μ
 , μ μ
 μ μ μ
 , μ μ
 [29]. μ .
 cSherry & Jamieson [30] μ μ
 μ
 . μ ,
 .
 μ . μ μ μ
 μ μ [31]. μ ,
 μ μ μ μ μ -
 μ .
 μ μ Florence Nightingale,
 .
 , μ ,

μ [32]. Leininger
 μ , μ μ μ
 μ
[33].
 μ , μ μ
 μ , μ μ μ
 μ , μ μ μ
 μ [34].
 μ μ μ . [35].
 μ , μ μ
 μ , μ μ μ [34].
 μ μ μ -
[23].
 μ μ ,
 μ , μ ,
 μ μ μ
[35]. μ
 μ
 μ [36].
 μ μ [37,38].
 μ μ
: μ , μ ,
 μ
. μ μ
[39]. , μ μ
(μ μ) .

μ , μ .
μμ .
μ , μ
μ . ,
μ , μ
μμ ,
μμ . [43].
μ μ μ
[44].
μ , μ ,
μ
μ ,
μμ
[32].
μ ,
μ μ μ
μ , μ μ
μ , μ , μ
μ [45].

3.

3.1

μ

μ

μ

[4].

μ

μ

[46].

,

μ

μ

μ

.

μ

μμ

μ

μ

μ

.

μ

μ

μ

μ

μ

[47].

,

,

μ

μ

μ

[4].

μ

μ

μ

μ

μ

[45].

μ

μ

μ

,

,

μ

μ

[48].

,

μ

μ

[4].

:

•

μ

μ

,

μ

•

μ

,

μ

μ

μ

μ

μ

[49].

[50].

Nightingale.

Florence Nightingale [51],

Nightingale

[15].

[52].

μ

Martha Rogers.

μ ,

μ ,

μ

,

μ μ

.

μ

μ

μ

, μ μμ ,

[53].

H Rogers [54]

μ

μ

μ

.

μ

μ

μ

μ

μ ,

μ

μ

μ

μμ

μ

.

R gers,

μ

,

μ

μ

μ

,

μ

,

μ

[15].

« μ »

μ

μ ,

,

μ ,

,

μ , μ

,

,

,

μ

μ

μ

[47].

Newman: H

μ

.

μ

,

μ

μ

.

μ Newman

μ

[15].

To μ

ewman

μ

μ

μ

stress.

stress μ

μ

μ

μ , μ

μ ,

μ

[55].

Newman, Rogers, [56].

[15]. Newman stress [57].

« » « »

[15].

Madeline Leininger

Madeline Leininger [57].

Leininger [58]

O, , μ , μ , μ , μ μ

[59,60].

μ

μ

μ μ

[57].

μ

μ

[47].

μ

μ

[61].

μ

μ

μ μ

μ μ

μ

[57].

μμ

Orem.

Orem

μ

μ

[57].

μμ

Dorothea Orem

μμ

(μμ μ)

μ .

1.

μ

2.

μμ

μ μ

3.

μ ,

(

μ

), μ

(

μ μ
) , - μ (μ
)

[62].

μ King.
H King, μ
μ μ , μ ,
μ () , μ

[4].

μ μ μ ,
μ , μ , μ
μ μ [4].
μ I. King μ
μ , ,

[63].

μ μ :
. μ (μ). μ , ,
, , μ μ
μ [63].
. μ (μ). μ
, μ
, , [63].
. (μ). , μ
μ μ
μ μ , μ , μ , μ
μ [63].

[4].

To μ King

μ , ,
[57].

μ Roy
Roy μ ,

«

μ μ » [64]. :

1. - : μ
μ .
μ , μ
μ μ μ .

μ , μ μ μ
μ μ μ .

2. - - μ :
μ , μ ,
μ .

3. : μ
μ , μ .

4. :
μ , μ , μ
μ . [64].

O μ μ
μ μ μ .
μ μ μ μ μ
μ μ μ μ μ , μ
μ μ μ μ μ , μ
μ μ μ μ μ , μ

μ , μ [65].

Jean Watson .

H Jean Watson [17] μ

μ .

μ μ

. μ μ , μ

μ μ μ μ

μ μ Watson [17].

μ , μ ,

[66].

Watson 10

,

:

1. μ - μ

2. -

3.

4. μ ,

5. μ μ μ

6. μ , μ μ μ

7. μ

8. , μ , ,

9.

10. - μ μ [17].

μ μ ,

[28].

Peplau.

μ μ , μ [67].
μ

1. μ :
μ . μ

2. . μ
μ .

3. . μ « μ »
μ .

4. . (μ)
μ , μ μ [68].

μ
μ μ [69].

Roper-Logan-Tierney.

Roper-Logan-Tierney

1. μ (maintaining a safe environment)
- 2.E (communicating)
- 3.A (reathing)
4. (eating and drinking)
5. (eliminating)
6. μ (personal cleasing and dressing).

μ , μ , μ μ
μ , μ
» [72].

3.3 μ

μ 70
o Caring Assessment Report Evaluation Q-Sort ,
CARE-Q μ μ Larson
. (73,74)

μ μ . Care-Q μ
μ Q μ μ [32].
1980,

μ , μ ,
Caring Behaviors Inventory (CBI), Caring Behavior Assessment (CBA) [75,76].
90 Caring Dimensions Inventory (CDI)
Watson & Lea Nursing Dimensions
Inventory (NDI) [77].

E μ ,
μ μ μ
μ μ . μ μ
μ μ μ

Individualized Care Scale (ICS) [78].

μ , μ
μ , μ
μ μ μ
μ μ [32].

4.

()

Η

μ

μ

μ

μ

μ

μ

(, , μ).

μ

μ

μ

24

μ

μ

μ

μ

μ

μ

μ

μ

μ

, μ

μ

«

»

μ

μ

μ

μ

μ

μ

μ

μ

μ

μ

μ

μ

μ

μ

[79,80].

•

,

μ

μ

μ

μ

μ

μ

μ

•

- μ μ

- μ μ μ

- μ

- μ

-

-

- μ ,

- μ μ μ

μ μ μ μ .

1953

μ μ . μ

,

1960, μ μ

μ ,

.

1958 «Johns Hopkins Bayview Hospital» («Baltimore City Hospitals»),

μ μ μ μ μ

μ μ ,

.

1960, μ 1969, μ

(The American Association of Critical

Cove Nurses, AACN) μ 140 μ .

μ μ μ

μ 1978.

.

I. μ . .

μ . .

.

μ , , μ

μ . μ :

. μ ,
μ μ μ
μ μ μ μ .
μ μ μ μ ,
μ μ
..
,
μ .
, μ μ μ μ
μ μ μ μ μ ,
μ [81,82].

μ Pearson. μ) ANOVA (μ),
 μ μ $p < 0,05$.

6.

μ (88,8%), μ (67,2%).
 μ μ (72,6%), 15,2%
 μ . μ
 10 μ (66%).

1. μ

μ

		%
	15	11,2
	119	88,8
	134	100
μ /	38	27,7
μ /	92	67,2
μ /	4	2,9
/	3	2,2
	137	100
μ		
/ μ	26	19,0
<150.000	24	17,5
>150.000	87	63,5
	137	100
	128	92,8
	10	7,2
	138	100
	90	68,2
	42	31,8
	132	100

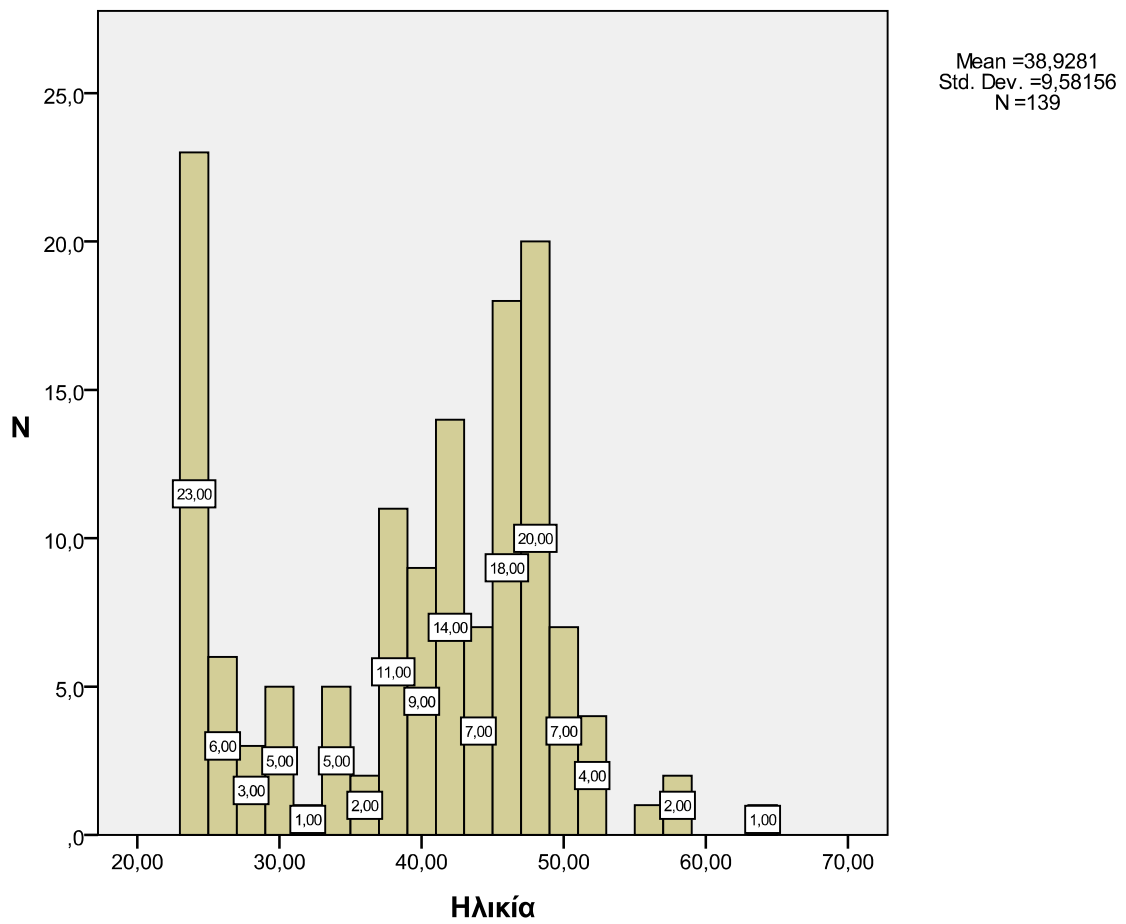
2.	μ	μ	.
			%
		15	11,1
		140	72,6
		135	100,0
Master	μ	15	15,2
		1	1,0
		83	83,8
		99	100,0
0-5	μ	26	19,5
5-10		19	14,3
10-15		28	21,1
15-20		22	16,5
	20	38	28,6
		133	100,0

38,8% μ μ
 15,5% μ , 50,0% μ 40% μ ,

3.	μ	
		%
	μ	23
		17,8
		3
		2,3
		50
		38,8
		20
		15,5
		33
		25,6
		129
		100,0
	μ	49
		38,9
		63
		50,0
		4
		3,2
		5
		4,0
	μ	5
		4,0
		126
		100,0
	μ	

	51	40,5
	46	36,5
	3	2,4
μ	15	11,9
	8	6,3
	2	1,6
	1	0,8
	126	100,0

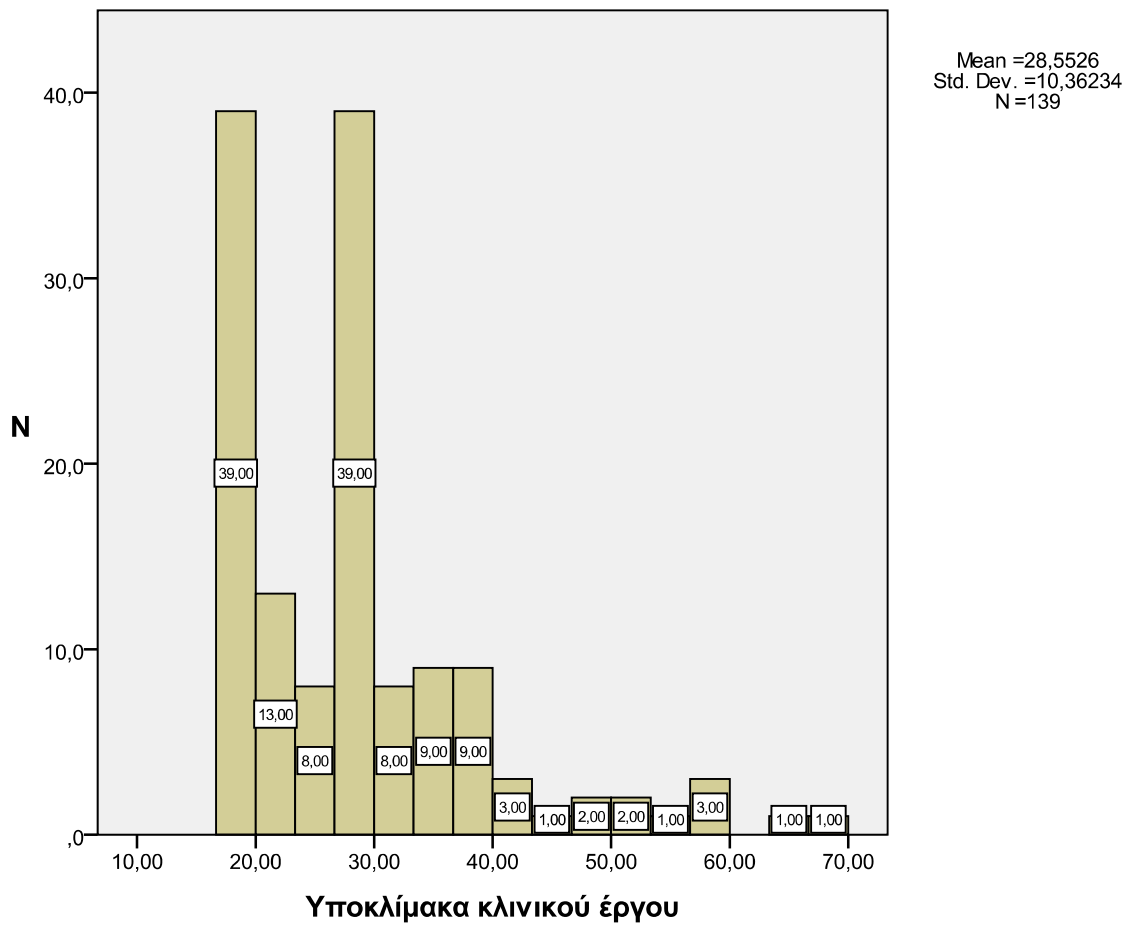
μ 24 μ 64 μ 38,92 , μ μ
 μ 1. μ μ



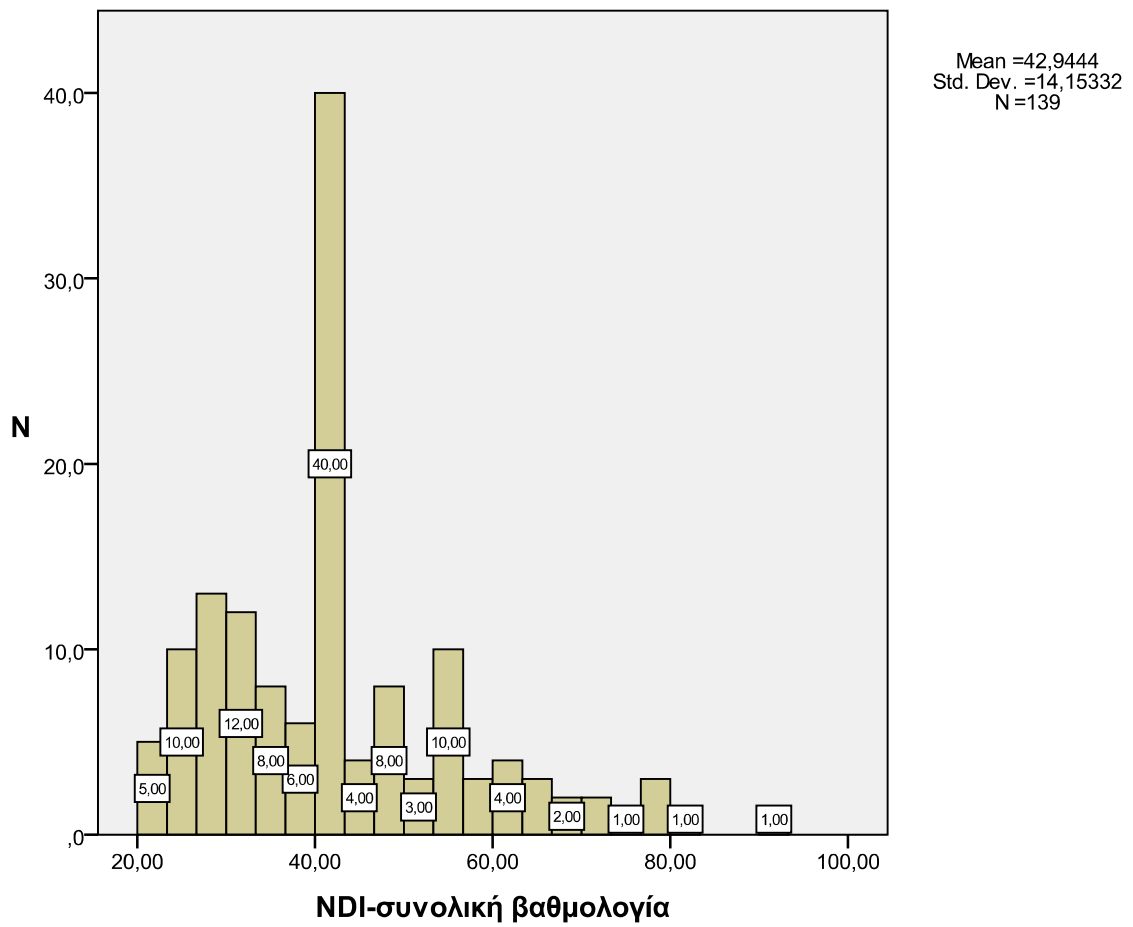
		*	*
μ	μ	2,17	1,42
μ	μ	1,59	1,08
μ	μ	2,13	1,30
μ	μ	1,51	1,03
	μ	2,42	1,32
	μ	1,77	1,15
		1,62	1,15
	μ	2,47	1,24
/		1,77	1,06
μ	(μ , μ , . .)	2,29	1,24
	μ	1,69	1,04
	μ	1,68	1,04
	μ	1,69	1,11
	μ	2,60	1,24
		2,66	1,24
		1,78	1,13
		1,77	1,17
	μ	1,87	1,14
		1,61	1,08
	μ	1,56	1,10
		1,77	1,15
(μ , μ , . .)	μ "	1,52	1,06
μ)	2,12	1,33
)	1,48	1,07

	5. μ	μ	μ .	μ	*,**	*
1.	μ ,	μ			3,31	1,04
2.	μ ()				2,50	0,97
3.			μ		2,42	0,89
4.O	,				2,27	0,90
5.	μ				3,72	0,97
6.	μ		μ		3,24	0,92
7.	μ	μ	μ		3,66	0,83
8.	μ	μ			4,06	0,79
* : μ , :						
**Y μ 1-4 μ μ μ , 5-8						

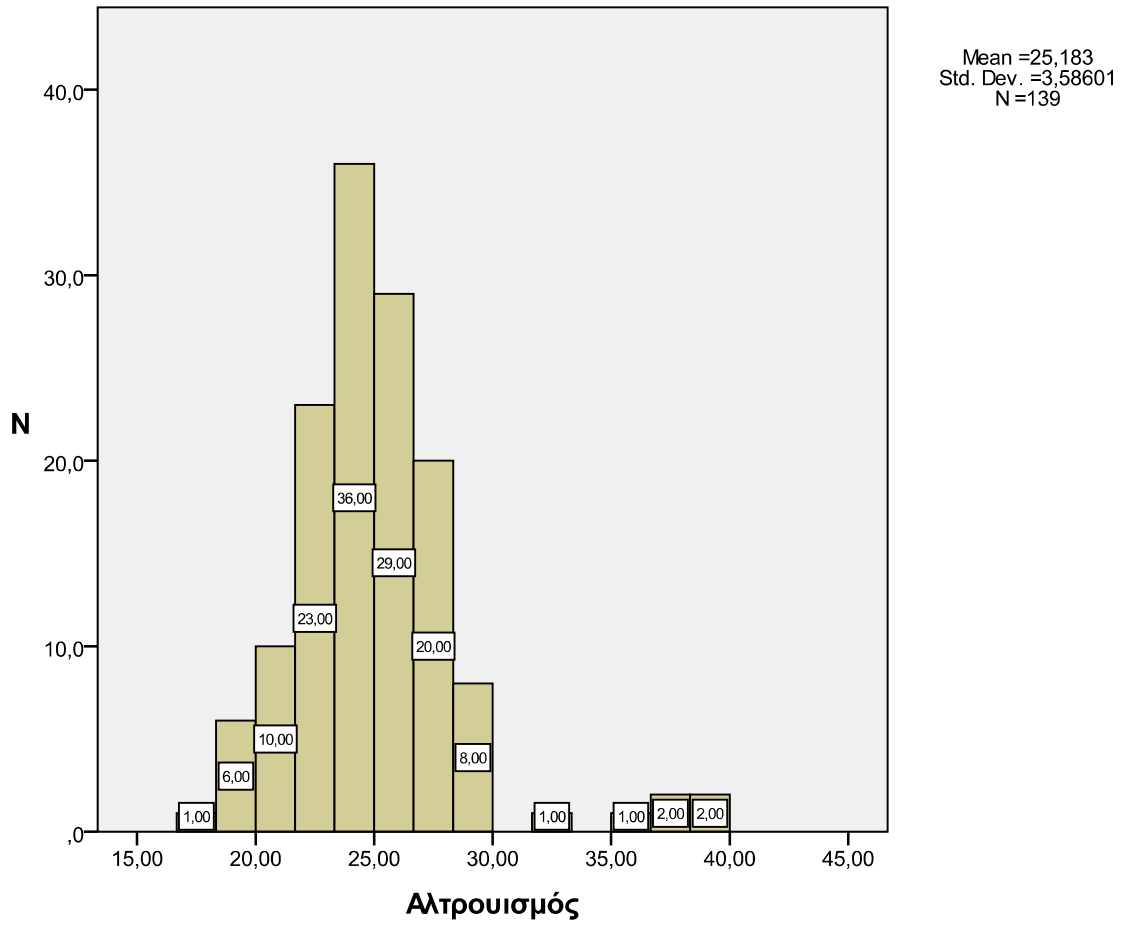
μ 3. μ μ μ



μ 4. μ μ μ NDI



μ 5. μ μ μ μ



8.	μ	μ	μ	p-value
	N			
	15	11,16	2,938	0,025
	119	14,38	5,577	
	15	25,48	5,318	0,105
	119	28,49	10,353	
GR-NDI-24	15	37,31	7,112	0,068
	119	42,98	14,274	

μ $\mu=14,38$ μ μ μ $\mu=11,16$ μ $p=0,025.$

9.	μ	μ	μ	μ
	N			p
	NAI	128	14,15	5,451
				0,725
	OXI	10	14,51	5,796
	NAI	128	28,07	9,914
				0,029
	OXI	10	34,61	14,676
GR-NDI-24	NAI	128	42,41	13,687
				0,043
	OXI	10	49,68	19,320

μ μ μ μ μ μ μ μ μ μ
 μ μ μ μ μ μ μ μ μ μ
 $\mu=34,61$ $p=0,029.$ μ μ μ $28,07$ μ μ
 μ μ μ μ $\mu=49,68$ $p=0,043.$ $\mu=42,41$ μ

10. μ μ μ μ

	N	p
--	---	---

ME	43	13,49	5,273	
	10	12,00	3,527	
				0,022
AKA	11	15,03	5,489	
MTN	22	17,53	6,120	
M	22	14,92	5,403	
	21	12,11	4,643	
K	10	13,71	5,144	
	139	14,18	5,436	

ME	43	26,41	8,949	
	10	24,70	6,27	0,091
AKA	11	30,24	12,060	

11.

μ

μ

		N	Mean	Std.Dev	p-value
A		38	15,43	5,280	
		92	13,61	5,499	0,207
		4	16,25	6,020	
		3	11,06	2,748	
		137	14,13	5,452	
A		38	31,04	11,119	
		92	26,98	9,512	0,020
		4	39,25	11,441	
		3	22,85	4,937	
		137	28,38	10,241	
GR-NDI-24	A	38	46,33	14,522	
		92	40,97	13,394	0,036
		4	55,50	17,175	
		3	33,98	7,778	
		137	42,73	14,036	

μ

μ

μ

μ

μ

μ

μ

μ . μ μ

μ , .

1. Online Etymology dictionary. Douglas Harper, 2001-2014.
2. μ . 2008,7:57-71 .
3. . μ . 2011, 27-33.
4. – . 2001, 41:129-137.
5. μ . : , 1998.
6. Van Hooft S. Bioethics and caring. *Journal of Medical Ethics*. 1996, 22:83-92.
7. Mayeroff M. *On caring*, New York: Harper & Ro Publishers, 1971.
8. May R. *Love and will*. New York: Dell Publishing Co. Inc, 1969.
9. Bevis EO. *Caring A life force*, in MM. Leininger Ed. *Caring*, pp.49-59. Detroit: Wayne State University Press, 1988.
10. Montgomery C. *Healing through communication. The practice of caring*. Sage Publications, 1993.
11. Arman, M, Rehnsfeldth A. The presence of love in ethical caring. *Nursing Forum*. 2006, 41:4-12.

12. Blattner B. *Holistic Nursing* Englewood Cliffs, NJ. Prentice Hall, 1981.

13. Leininger MM. The phenomenon of caring: importance, research question and theoretical consideration, in MM. Leininger Ed. *Caring*, pp.3-15. Detroit: Wayne State University Press, 1988.

14. Dingman K, Williams M, Fosbinder D, Warnick M. Implementing a caring model to improve patient satisfaction. *Journal of Nursing Administration*. 1999, 29:30-37.

15. , . μ : , 2011.

16. Watson J. *Assessing and measuring caring in nursing and health science*, New York: Springer Publishing, 2002.

17. Watson J. *Nursing: Human science and human care: a theory of nursing*. National League for nursing , New York, 1988b.

18. Watson J. Caring theory as an ethical guide to administrative and clinical practices. *Nursing Administration Quarterly*. 2006, 30:48-55.

19. Widar M, Ek AC, Ahlstrom G. Caring and uncaring experiences as narrated by persons with long-term pain after a stroke. *Scand Journal of Caring Science*. 2007, 21:41-47.

20. Tschudin V. *Ethics in Nursing: The caring relationship*, Elsevier Health Sciences, London, 2003.

21. Clarke, J. A view of the phenomenon of caring in nursing practice. *J Advanc Nurs*, 1992, 17:1283–1290.

22. Sullivan, B. Bridges and Barriers in the Therapeutic Relationship. n: Amalol E, Boggs K (eds) Interpersonal Relationships. WB Sanders Company, N. York, 1995, 107–126.
23. Fry, S. The ethic of caring: Can it survive in nursing? Nurs Outlook. 1988, 36–48.
24. , , , . . 2003, 42:97-109.
25. Svensson H, Stora hoersalen, Designhuset, Lund Institute of Technology, Sweden, June 2003, The public transport preferences of elderly people. www.empathy.com
26. American Nurses Association, Kansas City, MO.
27. Kalisch BJ, Landstrom GL, Hinshaw AS. Missed nursing care: a concept analysis. Journal of Advanced nursing. 2009, 65:1509-1517.
28. Watson J. The philosophy of science of caring, Revised 1995, Boulder. CO: Colorado Associated University Press, 1985.
29. 2001, 40:8-13.
30. McSherry W, Jamieson S. 2011. An online survey of nurses' perceptions of spirituality and spiritual care, Journal of Clinical Nursing. 2011, 20:1757-1767.
31. Starnes BJ, Wymer WW. Conceptual Foundations and Practical Guidelines for Recruiting Volunteers to Serve in Local Nonprofit Organisations: Part II. Journal of Nonprofit and Public Sector Marketing. 2001, 9:97–118.

32. Watson J. Caring as the essence and science of nursing and health care. *O Mundo da saude sao Paulo*. 2009, 33:143-149.
33. Bassett C. *Nursing care: from theory to practice*, London and Philadelphia: Whurr Publishers, 2004.
34. Clayton, G. *Connecting: A catalyst for caring*. In: Chin (ed) *Anthology of Caring*. New York, NLN Press, 1991.
35. Hawks, J. *Employment in nursing education: Concept analysis and application to philosophy learning and struction*. *J Advanc Nurs*, 1992, 17, 613.
36. Streubert HJ, Carpenter DR. *Qualitative research in nursing: Advancing the humanistic imperative*. Lippincott Williams & Wilkins, Philadelphia, 1999.
37. Gortner SR, Schultz PR. *Approaches to nursing science methods*. *Image: Journal of Nursing Scholarship*. 1993, 20:22-24.
38. Silva MC, Rothbert D. *An analysis of changing trend of philosophies of science on nursing theory development and testing*. *Advances in Nursing Science*. 1984, 6:1-13.
39. Blackburn S. *Oxford dictionary of philosophy*. Oxford University Press, New York, 1994.
40. Udomluck S, Tonmukayakul O, Tiansawad S, Srisuphan W. *Development of Thai Nurses' Caring Behavior Scale*. *Pacific Rim Int J Nurs Res*. 2010, 14:32-44.
41. Schoenhofer, S. O. *Choosing personhood: intentionality and the theory of Nursing as caring*. *Hol Nurs Pr*. 2002, 16:36-40.

42. International Council of Nursing. Code of Ethics for Nurses, Geneva, 2000.
43. Field L, Smith B. Nursing care an essential guide, England: Pearson Education, 2008.
44. Arthur D, Randle J. The professional self-concept of nurses: of review of the literature from 1992-2006. Australian Journal of Advanced Nursing. 2007, 24:60-64.
45. , μ 7 , 4 , μ - μ , 2008.
46. Chin P, Kramer M. Theory and nursing, ed 5th, St.Louis, Mosby, 1999.
47. μ μ μ , μ μ μ μ μ μ , 2010.
48. Vinson JA. Nursing's epistemology revisited in relation professional education competencies. Journal of Professional Nursing. 2000, 16:39-46.
49. Logan-Tierney μ . 2008. μ Roper- . 47: 21-36.
50. Polit DF, Hungler BP. Nursing research principles and methods, 2nd ed, Philadelphia: Lippincott Co, 1983.
51. Nightingale F. Notes on nursing: what is and what it is not (Commemorative Ed). First edition 1859, Philadelphia: Lippincott, 1992.

52. Small H. Florence Nightingale avenging angel. New York: St Martin's Press, 1998.
53. Smith MC. 1999. Caring and the Science of Unitary Human Beings *Advances in Nursing Science*. 1999, 2:14-28.
54. Rogers M. An introduction to the theoretical basis of nursing, Philadelphia: Davis, 1970.
55. Newman M. Health as expanding consciousness. New York: National League for Nursing Press, 1994.
56. Rice R. 1998. Implementing undergraduate student learning in home care. *Gen Nurs*. 1998, 19:106.
57. McEwen M, Wills EM. Theoretical basis for nursing, Philadelphia: Lippincott Williams & Wilkins, 2004.
58. Leininger M. Transcultural nursing concepts, theories and practices, 3rd ed, Philadelphia: FA Davis, 1999.
59. Leininger MM. Culture care diversity and universality: A theory of nursing, New York: National League for Nursing Press, 1991.
60. Leininger MM. Assumptive premises of the theory. In: McQuiston CM, Webb AA (eds), *Foundations of nursing theory*. Thousand Oaks, CA: Sage. 1995, 387-402.
61. Lundy KS, Janes S. Community health nursing-caring for the public's health, 2nd ed, Janes and Bartlett Learning, 2009.

62. Orem DE. Nursing: concepts and practice, Ed 6, St.Louis, Mosby, 1999.
63. Ugarriza DN. Intentionality: Applications within selected theories of nursing. *Holist Nurs Pract.* 2002, 16:41-50.
64. Roy C, Andrews HA. Roy adaptation model, 2nd ed, Stamford, CT: Appleton & Lange, 1999.
65. Basavanthappa Bt. Nursing theories, New Delhi : Jaypee, 2007.
66. , Palese A, Tomietto M, Balogh Z, Suhonen R, Leino-Kilpi H, Jarosova D, . : μ μ . 2010, 49:406-417.
67. Thompson L. Peplau's theory: An application to short term therapy. *Journal of Psychosocial Nursing and Mental Health Services.* 1986, 24:26.
68. D'Antonio P, Beeber L, Sills G, Naegle M. The future in the past: Hildegard Peplau and interpersonal relations in nursing. *Nurs Inq.* 2014 ,21:311-7.
69. Mischo-Kelling M, Wittneben K. *Pflegebildung und Pflege-theorien*, Munchen-Wien-Baltimore, Urban und Schwartzberg, 1995.
70. Burks DJ, Kobus AM. The legacy of altruism in health care: the promotion of empathy, prosociality and humanism. *Med Educ.* 2012, 46:317-325.
71. Gormley KJ. Altruism: a framework for caring and providing care. *Int J Nurs Stud.* 1996, 33:581-588.

81. μ , μ , , , , , .
. μ . 2011, 10:221-239.
82. . μ
. μ . 2011, 10:311-322.
83. Kotrotsiou E, Gouva M, Kotrotsiou S, Malliarou M, Paralikas Th. Validation of the Greek Translation of the Nursing Dimensions Inventory questionnaire (NDI-35) Global Journal of Health Science Global Journal of Health Science 2014, 6Q30-37
84. Watson R, Deary IJ, Hoogbruin AL. A 35-item version of the Caring Dimensions Inventory (CDI-35): multivariate analysis and application to a longitudinal study involving student nurses. Int J Nurs Stud. 2001, 38:511-521.
85. http://www.who.int/hrh/statistics/spotlight_2.pdf, μ 2.1.15
86. - , .
: μ μ ; μ μ
. 2000, . 482-498. : μ .
87. . μ .2010, : .
88. . μ μ μ /
μ μ (μ -μ)
μ , 2014

GR-NDI-24

: μ 1 (μ) 5
 (μ), μ
 :

		μ	μ	μ	μ	μ
1.	μ	/	1	2	3	4 5
2.		μ μ	1	2	3	4 5
3.		μ μ	1	2	3	4 5
4.		μ	1	2	3	4 5
5.		μ	1	2	3	4 5
6.		μ	1	2	3	4 5
7.			1	2	3	4 5
8.		μ	1	2	3	4 5
9.		μ	1	2	3	4 5
10.		(μ , μ , . .)	1	2	3	4 5
11.		μ	1	2	3	4 5
12.		μ	1	2	3	4 5
13.		μ μ	1	2	3	4 5
14.		μ	1	2	3	4 5
15.			1	2	3	4 5
16.			1	2	3	4 5
17.			1	2	3	4 5

	μ					
18.	μ	1	2	3	4	5
19.		1	2	3	4	5
20.	μ	1	2	3	4	5
21.	(μ, μ, \dots)	1	2	3	4	5
22.	μ " μ " (\dots) μ)	1	2	3	4	5
23.	(\dots)	1	2	3	4	5
24.	μ	1	2	3	4	5

1	2	3	4	5
---	---	---	---	---
