



« : »

μ μ :

: -

:

...

μ :

, ...

,

, μ μ

2015



« : »

Investigation of intensive care nurses' perception of care and its relationship with PHC

	μ	4
μ	4
Ευχαριστίες	5
	6
Abstract	7
	8
1.	8
2.	10
2.1	11
3.	16
3.1	μ	16
3.3	μ	26
4.	()	27
4.1	30
4.2	33
	35
5.	35
5.1	35
5.2	μ -	35
5.3	36
	36
6.	38
7.	53
	59
	68

μ

: μ

: μ μ

: μ

:

Abstract

Introduction: The nurses of ICU care for patients with life-threatening medical conditions and the patients often require long-term hospitalization. Therefore, nurses require many technical and behavioral skills to cope with the patient needs.

Aim: To investigate how nurses working in intensive care units and related sections in public hospitals, understand the concept of care and their relationship with the primary care.

Methodology: The survey involved 139 nurses working in intensive care units and related parts in closed GNL and UGNL who completed self-report questionnaires on socio-demographic data, altruism (altruism scale) and the importance of caring (NDI-24- GR).

Results: The nurses had relatively high levels of altruism (25.18 ± 3.58) and perceptual significance of care (42.94 ± 14.15). Subscale scores in clinical work and patient needs were respectively 28.55 ± 10.36 and 14.18 ± 5.43 . Care and altruism correlated significantly and positively. There were no differences depending on demographic and employment characteristics

Conclusion: The nurses working in the ICU and general hospital closed sections show very high levels of awareness of the importance of care in all its dimensions. Altruism and care are strongly related to one another.

Key words: care, nurses, intensive care unit, altruism

μ

μ

μ

μ

[3].

.

,

μ

μ

μ

μ

μ

,

μ

μ

[4].

, μ μ μ ,
 μ μ
 & [15].
 Watson [16] μ ,
 . μ , μ ,
 , [17]. μ μ
 μ ,
 Watson
 [18] .
 μ [19]. μ , ,
 , μ μ [20].

2.1

μ
 , μ μ .
 () μ
 () . μ
 μ
 [21]. μ μ μ
 μ , , μ ,
 μ μ [22].
 μ μ , μ
 . μ
 μ , μ
 [23].
 μ . ,
 μ Rogers
 « . μ
 μ μ .

μ μ μ , μ

, μ

». Rogers

μ μ , μ .

,

μ , μ

μ [24,25]. H American Nurses

Association [26] o ,

,

μ μ , μ

μ , ,

μ [27]. ,

μ μ μ

μ [13]. μ ,

μ μ μ

μ μ [28].

μ , , μ

, μ μ

μ μ μ

, μ μ

[29]. μ .

cSherry & Jamieson [30] μ μ

μ

. μ ,

.

μ . μ μ μ

μ μ [31]. μ ,

μ μ μ μ μ

μ

μ μ Florence Nightingale,

.

, μ ,

μ [32]. Leininger
 μ , μ μ μ
 μ
[33].
 μ , μ μ
 μ , μ μ μ
 μ , μ μ μ
 μ [34].
 μ μ μ . [35].
 μ , μ μ
 μ , μ μ μ [34].
 μ μ μ ,
 μ μ [23].
 μ μ ,
 μ , μ μ μ
[35]. μ
 μ μ [36].
 μ μ [37,38].
 μ : μ , μ ,
 μ
. μ μ
[39]. , μ μ
(μ μ) .

μ .

μ μ .

μ , μ

μ . ,

μ μ

μ μ ,

μ [43].

μ μ μ

[44].

μ , μ ,

μ μ

μ ,

μ μ

[32].

μ μ

μ μ μ μ

μ , μ μ μ

μ μ μ

μ [45].

3.

3.1

μ

μ

μ

[4].

μ

μ

[46].

,

μ

μ

μ

.

μ

μμ

μ

μ

μ

.

μ

μ

μ

μ

μ

[47].

,

,

μ

μ

μ

[4].

μ

μ

μ

μ

μ

[45].

μ

μ

μ

,

,

μ

μ

[48].

,

μ

μ

[4].

:

•

μ

μ

,

μ

•

μ

,

μ

μ

μ

μ

μ

[49].

[50].

Nightingale.

Florence Nightingale [51],

Nightingale

[15].

[52].

μ

Martha Rogers.

μ ,

μ ,

μ

,

μ μ

.

μ

μ

μ

, μ μμ ,

[53].

H Rogers [54]

μ

μ

μ

.

μ

μ

μ

μ

μ

μ ,

μ

μ

μ

μμ

μ

.

R gers,

μ

,

μ

μ

.

μ

,

μ

,

μ

[15].

« μ »

μ

μ ,

,

μ ,

,

μ , μ

,

,

,

μ

μ

μ

[47].

Newman: H

μ

.

μ

,

μ

μ

.

μ Newman

μ

[15].

To μ

ewman

μ

μ

μ

stress.

stress μ

μ

μ

μ , μ

μ ,

μ

[55].

Newman, Rogers, [56].
[15]. Newman stress [57].
[15].

Madeline Leininger
Madeline Leininger [57].
Leininger [58]
O, [57].
[15].

[59,60].

μ

μ

μ μ

[57].

μ

μ

[47].

μ

μ

[61].

μ

μ

μ μ

μ μ

μ

[57].

μμ

Orem.

Orem

μ

μ

[57].

μμ

Dorothea Orem

μμ

(μμ μ)

μ .

1.

μ

2.

μμ

μ μ

3.

μ ,

(

μ

), μ

(

μ μ
) , - μ (μ
)

[62].

μ King.
H King, μ
μ μ , μ ,
μ () , μ

[4].

μ μ μ ,
μ , μ , μ
μ μ [4].
μ I. King μ
μ , ,

[63].

μ μ :
. μ (μ). μ , ,
, , μ μ
μ [63].
. μ (μ). μ
, μ
, , [63].
. (μ). , μ
μ μ μ
μ μ , μ , μ , μ
μ [63].

[4].

To μ King

μ , ,
[57].

μ Roy
Roy μ ,

«

μ μ » [64]. :

1. - : μ
μ .
μ μ μ .

μ , μ μ μ .

2. - - μ : μ , μ ,
μ .

3. : μ
μ , μ .

4. : μ , μ , μ
μ . [64].

O μ μ
μ μ μ .
μ μ μ μ μ μ
μ μ μ μ μ , μ μ μ ,
μ μ μ μ μ , μ μ ,

μ , μ [65].

Jean Watson .

H Jean Watson [17] μ

μ .

μ μ

. μ μ , μ

μ μ μ μ

μ μ Watson [17].

μ , μ ,

[66].

Watson 10

,

:

1. μ - μ

2. -

3.

4. μ ,

5. μ μ μ

6. μ , μ μ μ

7. μ

8. , μ , ,

9.

10. - μ μ [17].

μ μ ,

[28].

Peplau.

μ μ , μ [67].
μ

1. μ :
μ . μ

2. . μ
μ .

3. . μ « μ »
μ .

4. . (μ)
μ , μ μ [68].

μ
μ μ [69].

Roper-Logan-Tierney.

Roper-Logan-Tierney

1. μ (maintaining a safe environment)
2.E (communicating)
3.A (reathing)
4. (eating and drinking)
5. (eliminating)
6. μ (personal cleasing and dressing).

μ , μ , μ μ
μ , μ
» [72].

3.3 μ
μ 70
o Caring Assessment Report Evaluation Q-Sort ,
CARE-Q μ μ Larson
. (73,74)

μ μ . Care-Q μ
μ Q μ μ [32].
, 1980,

μ , μ ,
Caring Behaviors Inventory (CBI), Caring Behavior Assessment (CBA) [75,76].
90 Caring Dimensions Inventory (CDI)
Watson & Lea Nursing Dimensions
Inventory (NDI) [77].

E μ ,
μ μ μ
μ μ μ μ
μ μ μ

Individualized Care Scale (ICS) [78].

μ , μ
μ , μ
μ μ μ
μ μ [32].

4.

()

Η

μ

μ

μ

μ

μ

μ

(

,

, μ

).

μ

μ

μ

24

μ

μ

μ

,

μ

μ

μ

μ

μ

μ

,

μ

μ

«

»

μ

μ

μ

μ

μ

μ

μ

μ

μ

μ

μ

μ

μ

μ

[79,80].

•

,

μ

μ

μ

μ

μ

μ

μ

•

μ μ μ

μ , μ

• μ

μ μ μ μ

μ μ μ

•

μ (Society of Critical Care Medicine)

μ

μ

- μ μ μ

- Shock

μ

-

- μ μ μ μ μ

μ

-

-

- μ

- μ

-

μ

-

-

μ -

• •

- μ

-Shock

- μ μ SARS, ,

μ

- μ μ

- μ μ μ

- μ

- μ

-

-

- μ ,

- μ μ μ

μ μ μ μ .

1953

μ μ . μ

,

1960, μ μ

μ ,

.

1958 «Johns Hopkins Bayview Hospital» («Baltimore City Hospitals»),

μ μ μ μ μ

μ μ ,

.

1960, μ 1969, μ

(The American Association of Critical

Care Nurses, AACN) μ 140 μ .

μ μ μ

μ 1978.

.

I. μ . .

μ . .

.

μ , , μ

μ . μ :

. μ ,
μ μ μ
μ μ μ μ μ .
μ μ μ μ μ ,
μ μ
..
,
μ .
, μ μ μ μ
μ μ μ μ μ μ ,
μ [81,82].

5.3

1. **GR- NDI-24):** NDI-35

2. **Altruism Scale (Ahmed Jackson, 1979):**

3. **S.P.S.S. 17.0.**

t-test (

μ Pearson. μ) ANOVA (μ),
 μ μ p<0,05.

6.

μ (88,8%), μ (67,2%).
 μ μ (72,6%), 15,2%
 μ . μ
 10 μ (66%).

1. μ

μ

		%
	15	11,2
	119	88,8
	134	100
μ /	38	27,7
μ /	92	67,2
μ /	4	2,9
/	3	2,2
	137	100
μ		
/ μ	26	19,0
<150.000	24	17,5
>150.000	87	63,5
	137	100
	128	92,8
	10	7,2
	138	100
	90	68,2
	42	31,8
	132	100

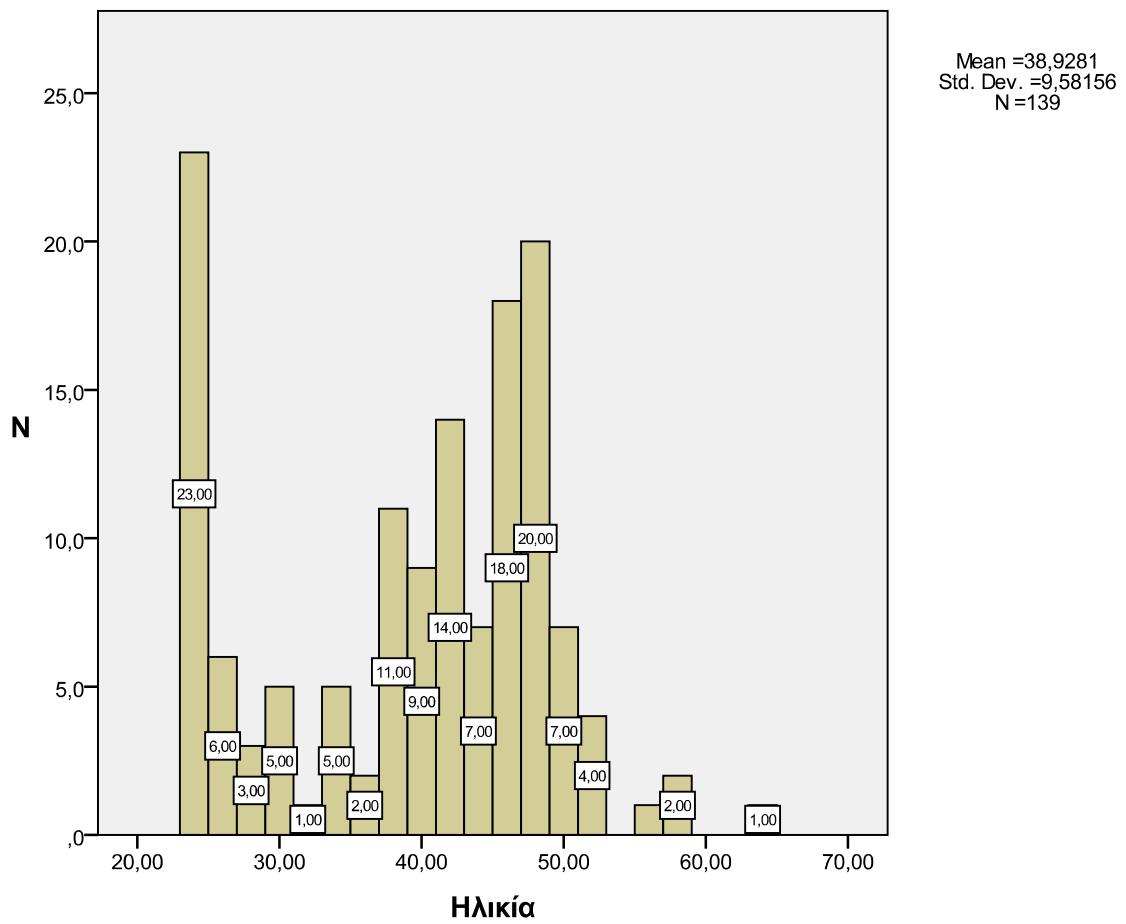
2.		μ	μ	.
				%
		15		11,1
		140		72,6
		135		100,0
Master	μ	15		15,2
		1		1,0
		83		83,8
		99		100,0
0-5	μ	26	μ	19,5
5-10		19		14,3
10-15		28		21,1
15-20		22		16,5
	20	38		28,6
		133		100,0

38,8% μ μ 50,0% μ 40% μ , μ .

3.		μ	μ	.
				%
	μ	23		17,8
		3		2,3
		50		38,8
		20		15,5
		33		25,6
		129		100,0
	μ	49	μ	38,9
		63		50,0
		4		3,2
		5		4,0
	μ	5		4,0
		126		100,0
	μ			

	51	40,5
	46	36,5
	3	2,4
μ	15	11,9
	8	6,3
	2	1,6
	1	0,8
	126	100,0

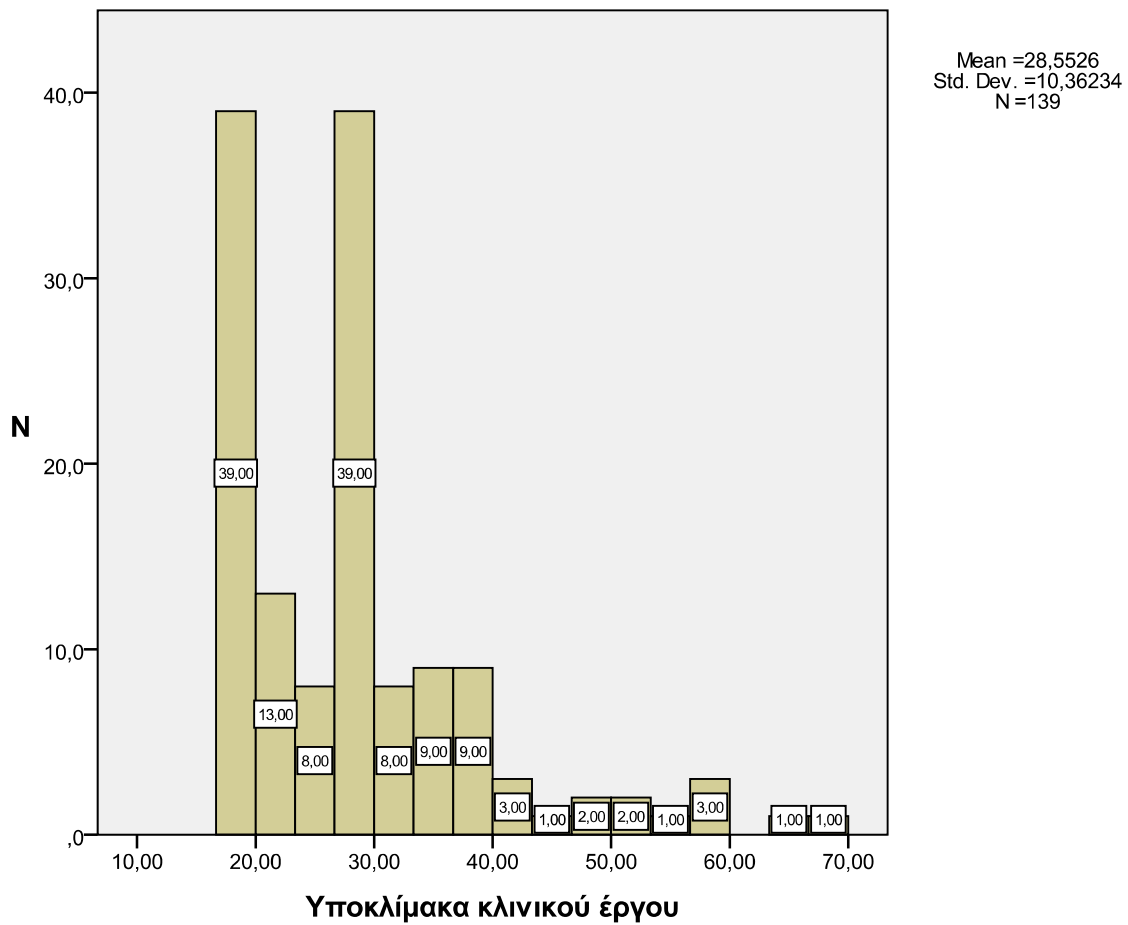
μ 24 μ 64 μ 38,92 , μ μ
μ 1. μ μ



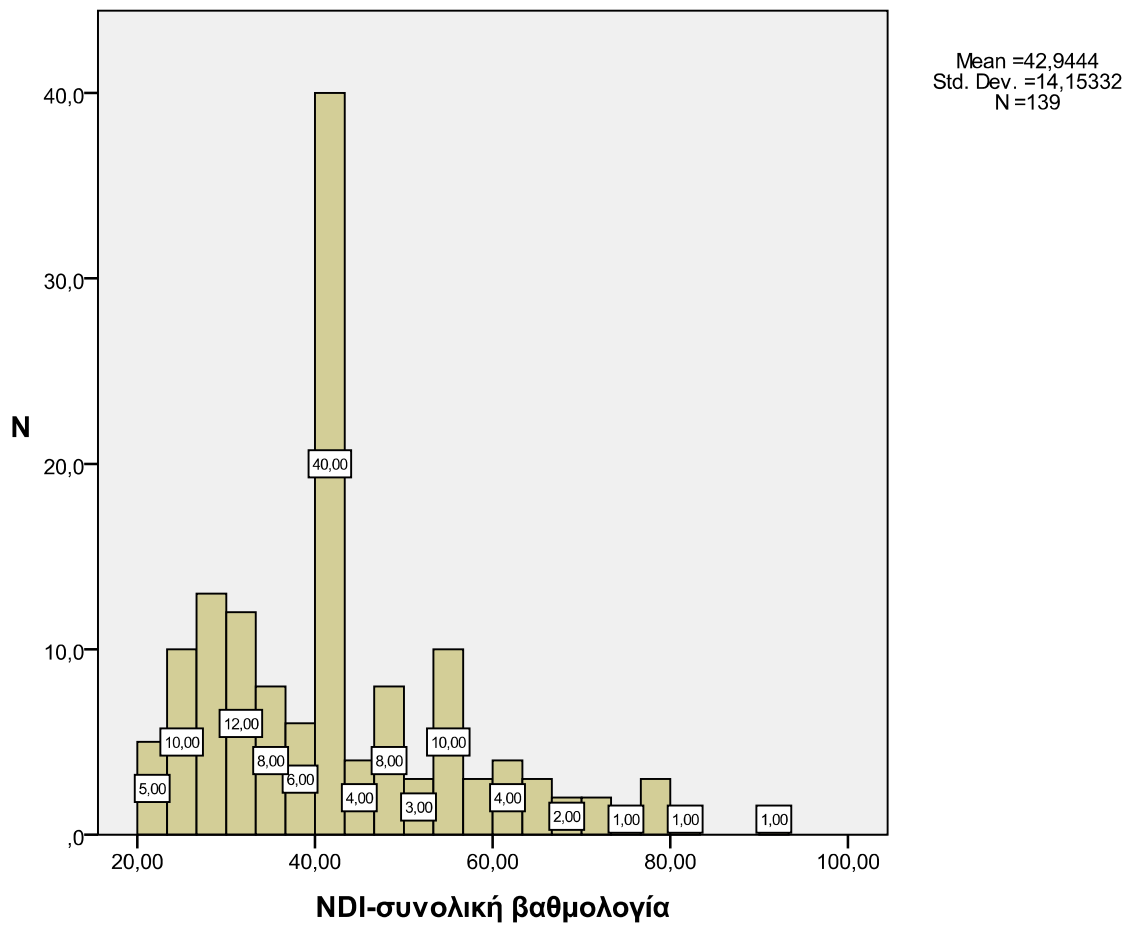
		*	*
μ	μ	2,17	1,42
μ	μ	1,59	1,08
4.	μ	2,13	1,30
	μ	1,51	1,03
	μ	2,42	1,32
	μ	1,77	1,15
	μ	1,62	1,15
	μ	2,47	1,24
/	μ	1,77	1,06
μ	(μ , μ , . .)	2,29	1,24
	μ	1,69	1,04
	μ	1,68	1,04
	μ	1,69	1,11
	μ	2,60	1,24
	μ	2,66	1,24
	μ	1,78	1,13
	μ	1,77	1,17
	μ	1,87	1,14
	μ	1,61	1,08
	μ	1,56	1,10
	μ	1,77	1,15
(μ , μ , . .)	μ "	1,52	1,06
μ)	2,12	1,33
)	1,48	1,07

	5. μ	μ	μ .	μ
				*,**
				*
1.	μ ,	μ		3,31
2.	μ ()			2,50
3.				2,42
4.O			μ	2,27
5.				3,72
6.	μ		μ	3,24
7.	μ			3,66
μ	μ		μ	
8.		μ		4,06
	μ			0,79
* :	μ ,	:		
**Y	μ		1-4 μ	μ μ ,
5-8				

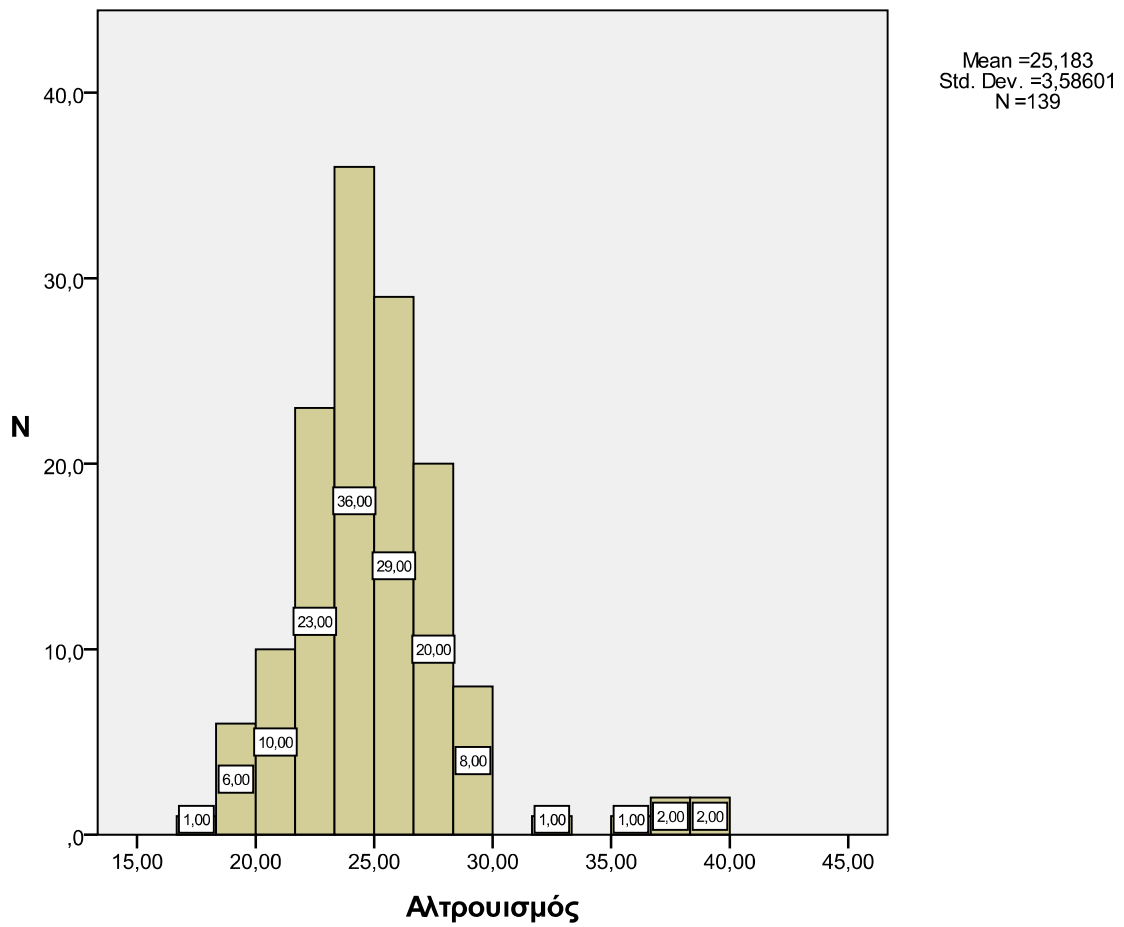
μ 3. μ μ μ



μ 4. μ μ μ NDI



μ 5. μ μ μ μ



μ μ μ μ μ μ μ μ μ μ
 μ μ μ μ μ μ μ μ μ μ
 $\mu=34,61$ $p=0,029.$ μ μ μ $28,07$ μ μ
 μ μ μ μ $\mu=49,68$ $p=0,043.$ $\mu=42,41$ μ

10. μ μ μ μ

	N				p
--	---	--	--	--	---

ME	43	13,49	5,273		
	10	12,00	3,527		
				0,022	
AKA	11	15,03	5,489		
MTN	22	17,53	6,120		
M	22	14,92	5,403		
	21	12,11	4,643		
K	10	13,71	5,144		
	139	14,18	5,436		

ME	43	26,41	8,949		
	10	24,70	6,27	0,091	
AKA	11	30,24	12,060		

11.

μ

μ

		N	Mean	Std.Dev	p-value
A		38	15,43	5,280	0,207
		92	13,61	5,499	
		4	16,25	6,020	
		3	11,06	2,748	
		137	14,13	5,452	
A		38	31,04	11,119	0,020
		92	26,98	9,512	
		4	39,25	11,441	
		3	22,85	4,937	
		137	28,38	10,241	
GR-NDI-24	A	38	46,33	14,522	0,036
		92	40,97	13,394	
		4	55,50	17,175	
		3	33,98	7,778	
		137	42,73	14,036	

μ
μ

μ

μ

μ
μ .

μ

μ

μ . μ μ

μ , .

1. Online Etymology dictionary. Douglas Harper, 2001-2014.
2. μ . 2008,7:57-71 .
3. . μ 2011, 27-33.
4. – 2001, 41:129-137.
5. μ : , 1998.
6. Van Hooft S. Bioethics and caring. *Journal of Medical Ethics*. 1996, 22:83-92.
7. Mayeroff M. *On caring*, New York: Harper & Ro Publishers, 1971.
8. May R. *Love and will*. New York: Dell Publishing Co. Inc, 1969.
9. Bevis EO. *Caring A life force*, in MM. Leininger Ed. *Caring*, pp.49-59. Detroit: Wayne State University Press, 1988.
10. Montgomery C. *Healing through communication. The practice of caring*. Sage Publications, 1993.
11. Arman, M, Rehnsfeldth A. The presence of love in ethical caring. *Nursing Forum*. 2006, 41:4-12.

12. Blattner B. *Holistic Nursing* Englewood Cliffs, NJ. Prentice Hall, 1981.

13. Leininger MM. The phenomenon of caring: importance, research question and theoretical consideration, in MM. Leininger Ed. *Caring*, pp.3-15. Detroit: Wayne State University Press, 1988.

14. Dingman K, Williams M, Fosbinder D, Warnick M. Implementing a caring model to improve patient satisfaction. *Journal of Nursing Administration*. 1999, 29:30-37.

15. , . μ : , 2011.

16. Watson J. *Assessing and measuring caring in nursing and health science*, New York: Springer Publishing, 2002.

17. Watson J. *Nursing: Human science and human care: a theory of nursing*. National League for nursing , New York, 1988b.

18. Watson J. Caring theory as an ethical guide to administrative and clinical practices. *Nursing Administration Quarterly*. 2006, 30:48-55.

19. Widar M, Ek AC, Ahlstrom G. Caring and uncaring experiences as narrated by persons with long-term pain after a stroke. *Scand Journal of Caring Science*. 2007, 21:41-47.

20. Tschudin V. *Ethics in Nursing: The caring relationship*, Elsevier Health Sciences, London, 2003.

21. Clarke, J. A view of the phenomenon of caring in nursing practice. *J Advanc Nurs*, 1992, 17:1283–1290.

22. Sullivan, B. Bridges and Barriers in the Therapeutic Relationship. n: Amalol E, Boggs K (eds) Interpersonal Relationships. WB Sanders Company, N. York, 1995, 107–126.
23. Fry, S. The ethic of caring: Can it survive in nursing? Nurs Outlook. 1988, 36–48.
24. 2003, 42:97-109.
25. Svensson H, Stora hoersalen, Designhuset, Lund Institute of Technology, Sweden, June 2003, The public transport preferences of elderly people. www.empathy.com
26. American Nurses Association, Kansas City, MO.
27. Kalisch BJ, Landstrom GL, Hinshaw AS. Missed nursing care: a concept analysis. Journal of Advanced nursing. 2009, 65:1509-1517.
28. Watson J. The philosophy of science of caring, Revised 1995, Boulder. CO: Colorado Associated University Press, 1985.
29. 2001, 40:8-13.
30. McSherry W, Jamieson S. 2011. An online survey of nurses' perceptions of spirituality and spiritual care, Journal of Clinical Nursing. 2011, 20:1757-1767.
31. Starnes BJ, Wymer WW. Conceptual Foundations and Practical Guidelines for Recruiting Volunteers to Serve in Local Nonprofit Organisations: Part II. Journal of Nonprofit and Public Sector Marketing. 2001, 9:97–118.

32. Watson J. Caring as the essence and science of nursing and health care. *O Mundo da saude sao Paulo*. 2009, 33:143-149.
33. Bassett C. *Nursing care: from theory to practice*, London and Philadelphia: Whurr Publishers, 2004.
34. Clayton, G. *Connecting: A catalyst for caring*. In: Chin (ed) *Anthology of Caring*. New York, NLN Press, 1991.
35. Hawks, J. *Employment in nursing education: Concept analysis and application to philosophy learning and struction*. *J Advanc Nurs*, 1992, 17, 613.
36. Streubert HJ, Carpenter DR. *Qualitative research in nursing: Advancing the humanistic imperative*. Lippincott Williams & Wilkins, Philadelphia, 1999.
37. Gortner SR, Schultz PR. *Approaches to nursing science methods*. *Image: Journal of Nursing Scholarship*. 1993, 20:22-24.
38. Silva MC, Rothbert D. *An analysis of changing trend of philosophies of science on nursing theory development and testing*. *Advances in Nursing Science*. 1984, 6:1-13.
39. Blackburn S. *Oxford dictionary of philosophy*. Oxford University Press, New York, 1994.
40. Udomluck S, Tonmukayakul O, Tiansawad S, Srisuphan W. *Development of Thai Nurses' Caring Behavior Scale*. *Pacific Rim Int J Nurs Res*. 2010, 14:32-44.
41. Schoenhofer, S. O. *Choosing personhood: intentionality and the theory of Nursing as caring*. *Hol Nurs Pr*. 2002, 16:36-40.

52. Small H. Florence Nightingale avenging angel. New York: St Martin's Press, 1998.
53. Smith MC. 1999. Caring and the Science of Unitary Human Beings *Advances in Nursing Science*. 1999, 2:14-28.
54. Rogers M. An introduction to the theoretical basis of nursing, Philadelphia: Davis, 1970.
55. Newman M. Health as expanding consciousness. New York: National League for Nursing Press, 1994.
56. Rice R. 1998. Implementing undergraduate student learning in home care. *Gen Nurs*. 1998, 19:106.
57. McEwen M, Wills EM. Theoretical basis for nursing, Philadelphia: Lippincott Williams & Wilkins, 2004.
58. Leininger M. Transcultural nursing concepts, theories and practices, 3rd ed, Philadelphia: FA Davis, 1999.
59. Leininger MM. Culture care diversity and universality: A theory of nursing, New York: National League for Nursing Press, 1991.
60. Leininger MM. Assumptive premises of the theory. In: McQuiston CM, Webb AA (eds), *Foundations of nursing theory*. Thousand Oaks, CA: Sage. 1995, 387-402.
61. Lundy KS, Janes S. Community health nursing-caring for the public's health, 2nd ed, Janes and Bartlett Learning, 2009.

62. Orem DE. Nursing: concepts and practice, Ed 6, St.Louis, Mosby, 1999.
63. Ugarriza DN. Intentionality: Applications within selected theories of nursing. *Holist Nurs Pract.* 2002, 16:41-50.
64. Roy C, Andrews HA. Roy adaptation model, 2nd ed, Stamford, CT: Appleton & Lange, 1999.
65. Basavanthappa Bt. Nursing theories, New Delhi : Jaypee, 2007.
66. , Palese A, Tomietto M, Balogh Z, Suhonen R, Leino-Kilpi H, Jarosova D, . : μ μ . 2010, 49:406-417.
67. Thompson L. Peplau's theory: An application to short term therapy. *Journal of Psychosocial Nursing and Mental Health Services.* 1986, 24:26.
68. D'Antonio P, Beeber L, Sills G, Naegle M. The future in the past: Hildegard Peplau and interpersonal relations in nursing. *Nurs Inq.* 2014 ,21:311-7.
69. Mischo-Kelling M, Wittneben K. *Pflegebildung und Pflege-theorien*, Munchen-Wien-Baltimore, Urban und Schwartzberg, 1995.
70. Burks DJ, Kobus AM. The legacy of altruism in health care: the promotion of empathy, prosociality and humanism. *Med Educ.* 2012, 46:317-325.
71. Gormley KJ. Altruism: a framework for caring and providing care. *Int J Nurs Stud.* 1996, 33:581-588.

72.
 , 2012.
73. Larson PJ. Comparison of cancer patients' and professional nurse's perceptions of important nurse caring behaviors. *Heart Lung*. 1987, 16:187-193.
74. Keane MS, Chastain B, Rudisill K. Caring: Nurse-patient perceptions. *Rehabil Nursing*. 1987, 12:182-187.
75. Wolf ZR, Colahan M, Costello A. Relationship between nurse caring and patient satisfaction. *Medsurg Nursing*. 1998, 7:99-105.
76. Walsh M, Dolan B. Emergency nurses and their perceptions of caring. *Emerg Nurse*. 1999, 7:24-31.
77. Watson R, Deary IJ, Lea A. A 35-item version of the caring dimensions inventory (CDI-35): multivariate analysis and application to a longitudinal study involving student nurses. *Int J of Nurs St*. 2001, 38: 511-521.
78. Suhonen R, Valimaki M, Leino-Kilpi H. Individualized care, quality of life and satisfaction with nursing care. *Journal of Advanced Nursing*. 2005, 50:283-292.
79.
 :
 μ μ
 , /μ ,
 2011.
80. , μ . μ
 , μ μ , / , 2007.

81. μ , μ , , , , , .
. μ . 2011, 10:221-239.
82. . μ
. μ . 2011, 10:311-322.
83. Kotrotsiou E, Gouva M, Kotrotsiou S, Malliarou M, Paralikas Th. Validation of the Greek Translation of the Nursing Dimensions Inventory questionnaire (NDI-35) Global Journal of Health Science Global Journal of Health Science 2014, 6Q30-37
84. Watson R, Deary IJ, Hoogbruin AL. A 35-item version of the Caring Dimensions Inventory (CDI-35): multivariate analysis and application to a longitudinal study involving student nurses. Int J Nurs Stud. 2001, 38:511-521.
85. http://www.who.int/hrh/statistics/spotlight_2.pdf, μ 2.1.15
86. - , .
: μ μ ; μ μ
. 2000, . 482-498. : μ .
87. . μ .2010, : .
88. . μ μ μ /
μ μ (μ -μ)
μ , 2014

GR-NDI-24

: μ 1 (μ) 5
 (μ), μ
 :

		μ	μ	μ	μ	μ
1.	μ	/	1	2	3	4 5
2.		μ μ	1	2	3	4 5
3.	μ	μ	1	2	3	4 5
4.		μ	1	2	3	4 5
5.		μ	1	2	3	4 5
6.		μ	1	2	3	4 5
7.			1	2	3	4 5
8.		μ	1	2	3	4 5
9.	μ	(μ , μ , . .)	1	2	3	4 5
10.		μ	1	2	3	4 5
11.			1	2	3	4 5
12.	μ		1	2	3	4 5
13.		μ	1	2	3	4 5
14.	μ		1	2	3	4 5
15.			1	2	3	4 5
16.			1	2	3	4 5
17.			1	2	3	4 5

	μ					
18.	μ	1	2	3	4	5
19.		1	2	3	4	5
20.	μ	1	2	3	4	5
21.	(μ, μ, \dots)	1	2	3	4	5
22.	μ " μ " (\dots) μ)	1	2	3	4	5
23.	(\quad)	1	2	3	4	5
24.	μ	1	2	3	4	5

1	2	3	4	5
---	---	---	---	---
